
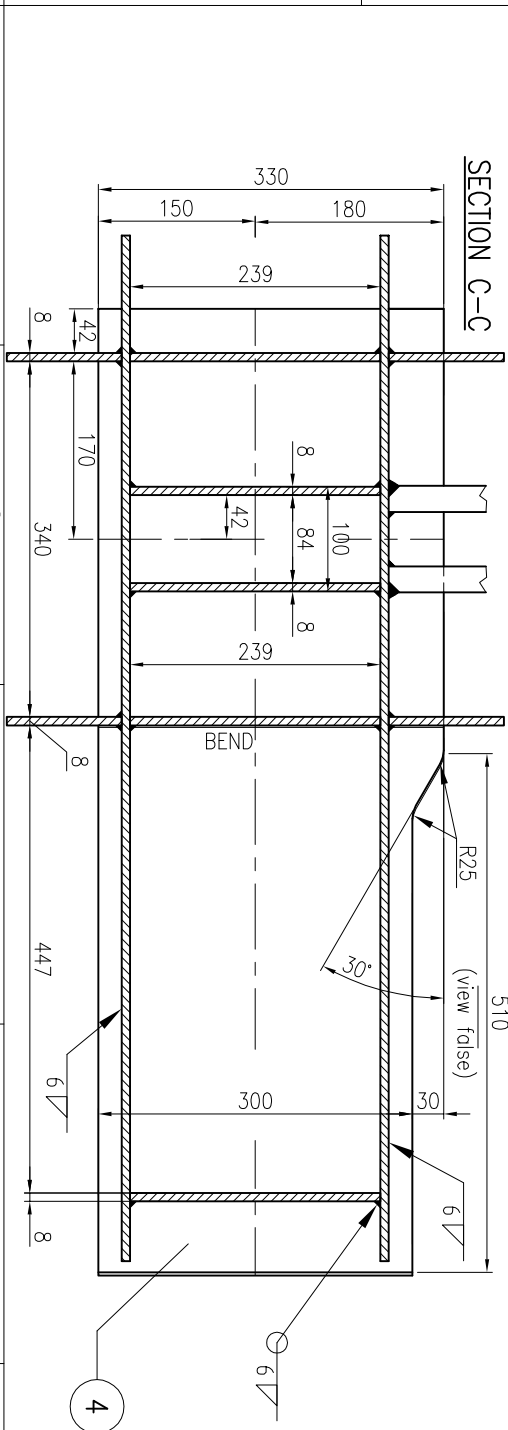


- NOTES:
- 1) RADIUS OF SCALLOPS ARE R=15 UNLESS OTHERWISE SPECIFIED.
 - 2) TO COMPLETE THE FRAME WITH THE MECHANICALS AND ELECTRICALS ACCESSORIES BRACKETS AND SUPPORTS.
 - 3) REFER TO DWG 12834-0550 FOR NON DESTRUCTIVE INSPECTIONS.
 - 4) FOR DIMENSIONAL AND GEOMETRICAL TOLERANCES IT IS TO BE REFERRED TO TECHNICAL SPECIFICATION ISSUED BY "OMG" ASSURANCE QUALITY SERVICE. CQ 80086.
 - 5) EXCEPT WHERE OTHERWISE INDICATED WELDS MUST BE  A=0.7xTh.min.
 - 6) WELD SYMBOLS ARE ACCORDING TO AWS STANDARD
 - 7) ROUND-OFF THE EDGE TO AVOID THE DETACHMENT OF PAINT



FOR N.1 CRANE MANUFACTURE N.1 PIECE

[illegible]